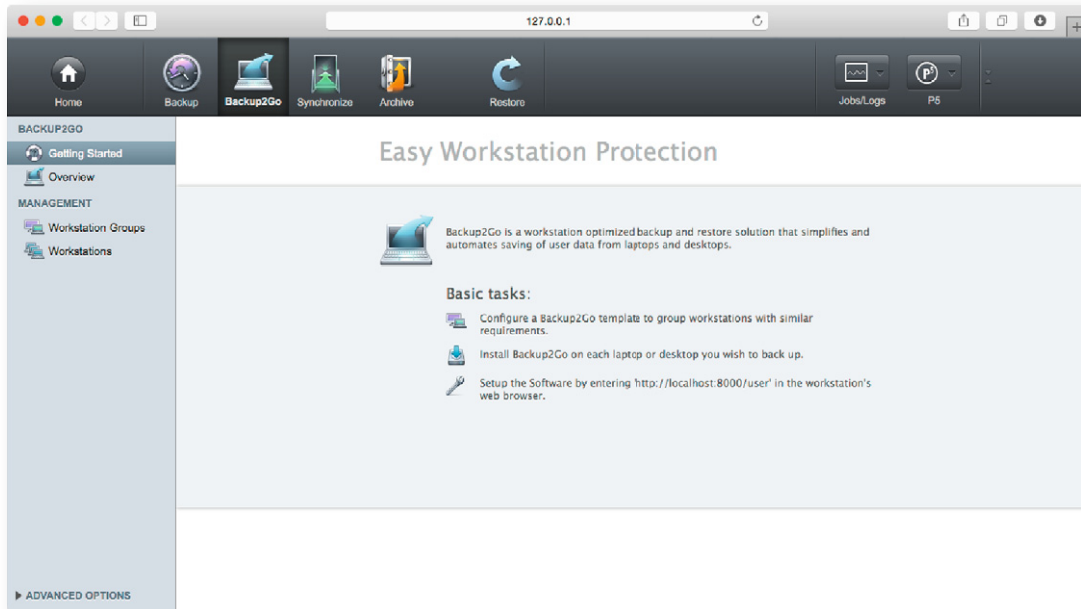




Archiware P5 Backup2Go



Archiware P5 Backup2Go offers a reliable, secure and efficient backup for laptops and workstations – regardless of their location. You could be in the office, on the road or at home!

Backup for Workstations

Efficiency: Client-triggered backup

P5 lets the laptop initiate its own backup as soon as a connection to the server can be established. Both server and network are used most efficiently.

Reliability: Full backup interruptions accepted

P5 Backup2Go tolerates interruptions during the backup process. If a workstation or laptop is shut down or loses the network connection, the backup process resumes automatically as soon as it is online again. Partial backups are fully functional.



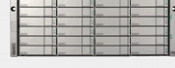
Zero Administration


P5 Backup2Go can be installed and used within minutes and is ready to save your data automatically. Workstation templates allow administrators to define and customize backup for any given workstation or groups of workstations. Rollout is easy since one template can be used by 10, 100 or more workstations.

Flexible automatic backup

Backups start automatically even after longer breaks. No special adjustments are necessary e.g. for vacations.

Workstation Backup
P5 Backup2Go



Online Backup

- ✓ Zero Administration
- ✓ Invisible in Background
- ✓ From anywhere
- ✓ User Restore & Timeline
- ✓ 10-100s Workstations

- Zero Administration
- High efficiency

- Central control
- User Restore



Archiware P5 Backup2Go



Security

Encryption for security

Files can be encrypted during transfer over a network and/or on the storage media. In addition, Archiware also backs up access rights and ACLs of a file.

This protects files against unauthorized access after restore. Access to view a workstation's index of saved files is managed via group-based access rights.

Administration

Backup Template Parameters

Administrators can establish or allow users to define certain parameters.

Configuration parameters

- Filter
- Backup interval
- Encryption
- Data compression
- Bandwidth limit
- Data retention
- User restore
- CPU throttle
- Maximum user per template

Comfort

Backup increments: Minimal server and network load

Since files are continuously backed up, even during long out-of-office periods, the volume of data for each backup increment remains small. Hence, network and server loads are kept to a minimum.

Invisible solution

P5 Backup2Go runs invisibly in the background while you work. Administrators can limit network bandwidth and CPU use to match needs of other tasks.

Restore

Simple, fast restore – both for administrators and users

The intuitive browser based interface lets you restore with a few clicks. Optionally, the administrator can assign users the right to restore their own data.

A time machine for your data

The backup index is displayed as a timeline. Users can view their file's history and retrieve a version backed up days, weeks or months before.

Archiware P5

Operating system requirements	Hardware requirements
Mac OS X	Memory
Intel 10.6 - 10.11	1 GB+
Windows	Hard disk
Server 2008R2, 2012R1/R2, Windows 7, 8, 8.1, 10 (64-Bit only) as Backup2Go Server: Windows 2008R and Windows 7	200 MB for Installation + variable (for backup/archive indexes)
Linux	Browser requirements
Kernel 2.6.4+ (x86 64-Bit) For FS-events with inotify, Kernel 2.6.13+ required. As Backup2Go Server: Btrfs 0.19+	Safari 5.1+, FireFox 3.5+, Chrome 4+, Internet Explorer 10+
Solaris	
Solaris: Sparc Solaris 2.8+, x86 Solaris 2.10+ Note: The language package Unicode UTF-8 is required.	
FreeBSD	
9.2, 9.3, 10.1, 10.2 (64-Bit)	
Virtualization	
x86 - VMware, Parallels, Xen, Hyper-V	