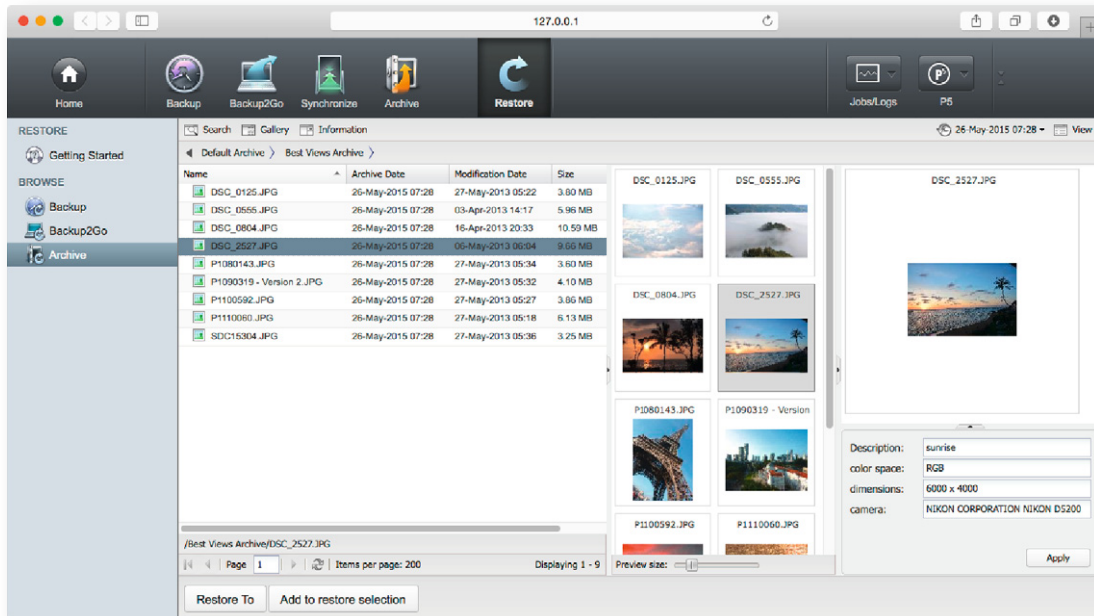




# Archiware P5 Archive



Archiware P5 Archive is the clear & easy solution for long-term storage. It offers extendable metadata fields and previews for effective search and retrieval.

### Maximum automation. Easy administration.

P5 Archive can monitor files, folders and the directory structure to archive files automatically. Fine-grained filtering may be applied to select or exclude files based on name, size, date etc. Within minutes, an archive can be configured and running. The browserbased interface enables fast and easy configuration, administration and monitoring – independent of your location.

### Efficiency and Security

#### Cost effective data migration

P5 Archive helps to move data to cost effective tape media. In the process, expensive server storage can be reclaimed while backup times are reduced. Quality of service and productivity increase for users and administrators.

By relieving your network of traffic and your stage of files, you get a better working experience and increased productivity.

#### Efficiency through parallelization

The parallelization option in Archiware P5 Archive allows simultaneous writing processes in libraries with multiple drives. Throughput is multiplied, shortening Archiving processes considerably.

**Migrate Data Offline to Tape/Disk**

**P5 Archive**

- ✓ Previews & Metadata
- ✓ Browse & Search
- ✓ User Restore
- ✓ Offsite Storage
- ✓ Video Archive

- More security
- Easy search

- Free storage
- Full flexibility

### Unparalleled security

P5 Archive provides maximum data security. Data can be cloned to a second tape for offsite storage. Encryption options protect data against unauthorized access both during the transfer and on the media itself.



# Archiware P5 Archive



## Comfort for admins and end user

Simple, user friendly search: P5 Archive offers extensible metadata fields. Previews of files such as PDF, images and video enhance browsing and searching.

Storable searches simplify the restore of project or subject related files.

### Search & Restore for users

P5 Archive provides configurable login areas for restricted or direct access to (selected) parts of the archive to browse, search and restore files.

### LTFS Export Option

For data transport, files from the Archive can be exported on LTFS formatted tapes. These tapes can be read with free applications from drive vendors as well as with Archiware's own tool Media LTFS (for Mac OS X).

### Incremental Archive

Data can now be archived in incremental mode.

This way, only new and changed files will be archived effectively, minimizing the growth of the Archive.

## Full flexibility

### Platform independence

You can restore data on any platform since P5 stores it in a platform neutral format, irrespective of file servers, hardware and operating system.

### Scalable & modular design:

#### Growing with your requirements

Archiware P5 modular design allows optimal adaptation to growing requirements. There are no limits to possible growth. You can add further Archiware products, hardware, media etc. smoothly at any point in time.

## Archiware P5

Operating system requirements	Hardware requirements
<b>Mac OS X</b>	<b>Memory</b>
Intel 10.6 - 10.11	1 GB+
<b>Windows</b>	<b>Hard disk</b>
Server 2008R2, 2012R1/R2, Windows 7, 8, 8.1, 10 (64-Bit only) as Backup2Go Server: Windows 2008R and Windows 7	200 MB for Installation + variable (for backup/archive indexes)
<b>Linux</b>	<b>Browser requirements</b>
Kernel 2.6.4+ (x86 64-Bit) For FS-events with inotify, Kernel 2.6.13+ required. As Backup2Go Server: Btrfs 0.19+	Safari 5.1+, FireFox 3.5+, Chrome 4+, Internet Explorer 10+
<b>Solaris</b>	
Solaris: Sparc Solaris 2.8+, x86 Solaris 2.10+ <b>Note: The language package Unicode UTF-8 is required.</b>	
<b>FreeBSD</b>	
9.2, 9.3, 10.1, 10.2 (64-Bit)	
<b>Virtualization</b>	
x86 - VMware, Parallels, Xen, Hyper-V	